

For Sale

LANDWOOD GROUP



Apartment 108 The Base, Worsley Street, Manchester, M15 4JP

Two Bed Apartment

The Base, Manchester

- Well-presented two bedroom apartment
- Located in the sought after Castlefield area of Manchester City Centre
- Positioned on the first floor of the Base Development
- Benefitting from two bathrooms, secured parking & balcony
- Available with Vacant Possession

Contact:

t: 0161 710 2010

e: charlotte.haynes@landwoodgroup.com or
holly.surplice@landwoodgroup.com

Viewings:

Strictly by Appointment

Landwood Group, South Central
11 Peter Street
Manchester
M2 5QR

Date Particulars — March 2020



Location

The Base is located in the sought after Castlefield area of Manchester City centre. The area is extremely popular with young professionals and students due to its short distance from Manchester City Centre, next door to a selection of bars and restaurants and its close proximity to the university buildings.

It has excellent road links into and around the city centre and the Deansgate/Castlefield metrolink station is located approximately 5 minutes' walk away.

Description

This well presented, spacious two bedroom apartment is positioned on the first floor of the development and benefits from secure underground allocated parking, secured access, lift service, intercom system and private balcony.

Accommodation

Internally the flat has an entrance hall with useful storage cupboard leading into a spacious, bright living area with floor to ceiling double glazed windows with door leading to private balcony with timber decking large enough for a table and chairs. There is a fitted kitchen with electric four ring hob, electric oven, stainless steel overhead extractor, complementary work surfaces and splash backs. There are two large double bedrooms with the master having an en-suite. The house bathroom has a shower over the bath, wall mounted hand wash basin, w/c, vanity shelf and tiling to splash back and floor.

Tenure Information

The premises are held under a long leasehold title for a period of 125 years from 2003, under title number MAN60976. The annual service charge is £2045.76 per annum with the ground rent being £276.52 per annum.

Tenancies

Available with vacant possession.

VAT

All figures quoted are exclusive of VAT which may be applicable.

Legal

Each Party will be responsible for their own legal costs.

Price

£200,000.

EPC

EPC rating D.

Important Notice

Landwood Commercial (Manchester) Ltd for themselves and for the Vendors or Lessors of this property, whose agents they are, give notice that: 1) The information contained within these particulars has been checked and is understood to be materially correct at the date of publication; 2) All descriptions, statements, dimensions, references to condition and permissions for the use and occupation or other details are given in good faith; however, they are made without responsibility and should not be relied upon as representation of fact, intended purchasers or lessors should, by enquiry to our Manchester office, satisfy themselves as to the corrections and availability, in each case, before arrangements are made to view (if the site comprises of buildings); 3) Unless otherwise stated, all prices rents and other charges are quoted exclusive of Value Added Tax (VAT). Any intended purchasers or tenants must satisfy themselves independently as to the incidence of of any transaction; 4) All plant, machinery, equipment, services and fixtures and fittings referred to in these particulars were present at the date of publication. They have not, however, been tested and therefore we give absolutely no warranty as to the it condition or operation; 5) These particulars do not constitute part of an and neither do Landwood Commercial (Manchester) Ltd, nor any person in their employment have any authority offer or contract; 6) The vendors or lessors do not make or give – and neither do Landwood Commercial (Manchester) Ltd, nor any person in their employment have any authority to make or give – any representation or warranty whatsoever in relation to this property.

Photographic Schedule

LANDWOOD
GROUP



Living Area



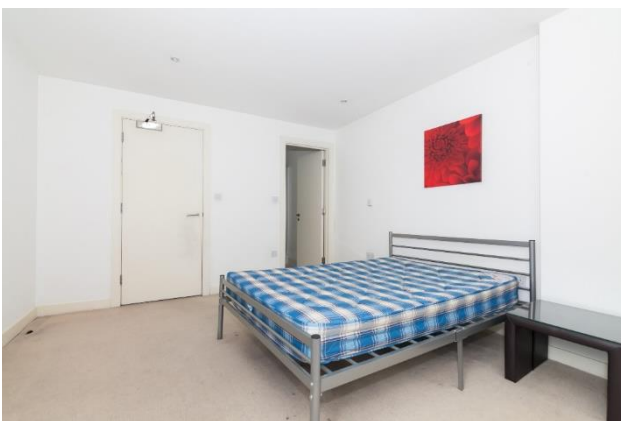
Bedroom



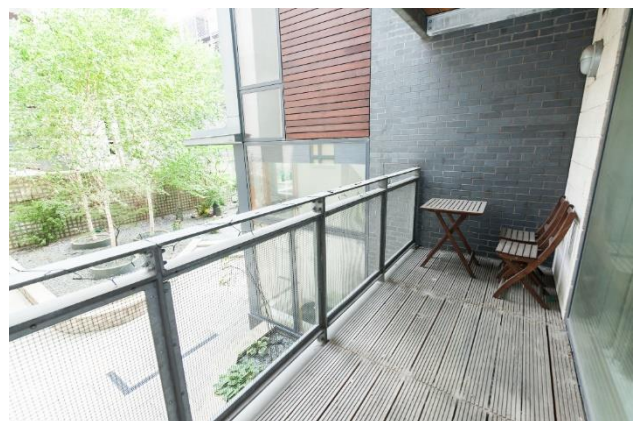
Kitchen



Bathroom



Bedroom

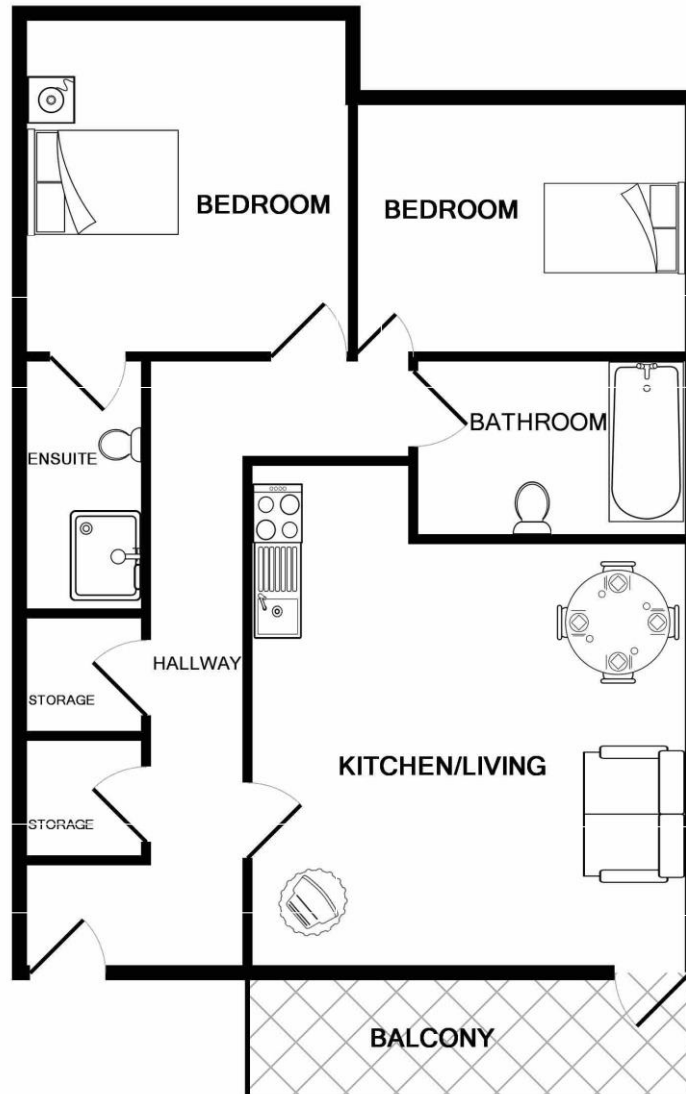


Balcony

Landwood Group
South Central
11 Peter Street
Manchester M2 5QR

t: 0161 710 2010
f: 0161 710 2050
w: www.landwoodgroup.com

www.landwoodgroup.com



Whilst every attempt has been made to ensure the accuracy of the floor plan contained here, measurements of doors, windows, rooms and any other items are approximate and no responsibility is taken for any error, omission, or mis-statement. This plan is for illustrative purposes only and should be used as such by any prospective purchaser. The services, systems and appliances shown have not been tested and no guarantee as to their operability or efficiency can be given
Made with Metropix ©2018